

Private Markets Asset Allocation Framework

INVESTMENT INSIGHT | PORTFOLIO SOLUTIONS GROUP | 2025

This paper introduces our proprietary Private Markets Asset Allocation Framework (PMAAF), designed to help investors think about how to allocate their dry powder across private markets and cycles. PMAAF is a process built on three pillars, outlined below:

- 1. Cycle Indicators:** We look at key indicators to assess the attractiveness of private markets and the point in the cycle.
- 2. Scoring and Thematic Matrixes:** Our Scoring Matrix is a bottom-up, data-driven framework that provides objective, evidence-based, repeatable and consistent scoring across asset classes and sectors. The framework is complemented by our top-down Thematic Matrix.
- 3. Monitoring:** We monitor progress and assess risk for the life of our investments.

Executive Summary

What was our thinking when we developed the PMAAF? The private markets ecosystem has a wide variety of strategies, participants, assets and dynamics. We favor this space given the large alpha potential beyond the illiquidity premium, the long-term earnings growth potential and certain diversification benefits relative to traditional public markets.¹ However, the lack of public information, limited availability of private data, delayed valuations, illiquidity, wide dispersion of returns and behavioral biases all combine to create a challenge for an investor to determine:

1. Asset allocation decisions and relative attractiveness across time periods.
2. Portfolio construction decisions and relative attractiveness across asset classes and strategies.
3. A consistent way to monitor the health and risks of private markets.

¹ Diversification does not eliminate the risk of loss show less

AUTHOR

PORTFOLIO SOLUTIONS GROUP

Specialists in designing and managing custom multi-asset, multi-manager investment solutions that span from broadly diversified to focused portfolios.¹ The team's expertise lies in partnering with institutional and high net worth investors to understand their unique needs and crafting solutions to help them achieve their overall investment object

In our three previous thought pieces on private markets, we illuminated aspects of these questions in specific contexts. For example, in both “[Post-Crisis Private Markets Investing](#)” and “[Market Timing in Private Investments](#),” we provided a relatively broad answer to the first question by analyzing attractiveness and timing characteristics during cycles. Similarly, in “[A Standout in the Crowd?](#),” which addressed attractiveness of size cohorts, we provided a partial answer to the second question. Building on this earlier work, we provide a more general and complete approach to all three questions in this paper, by introducing the PMAAF.

Introduction

Decision-making on asset allocation and portfolio construction in public markets is widely supported by a large

set of public databases, recurring data and portfolio optimization tools, as well as straightforward rebalancing. This gives investors the possibility to make quick, informed decisions based on their framework. Investors and allocators in private markets oftentimes do not have a similarly well-established framework that mirrors those of public markets. This is in part due to factors such as delayed valuations, heterogeneity in the underlying asset classes, and the obvious difficulties and frictions that limit effectively rebalancing.

In many cases, private markets views rely on top-down, qualitative inputs given the difficulty of finding quality recurring data and the complexity of organizing a more quantitative-driven view. In particular, we believe that one of the most important questions facing multi-private market allocators, and perhaps one of the least well-tackled

aspects of their investment process, is how to commit and allocate dry powder. We approached this problem by creating a framework that builds from the systematic, objective and data-driven methodologies many investors use to determine allocations in public markets and complementing it with inputs dedicated to private markets.²

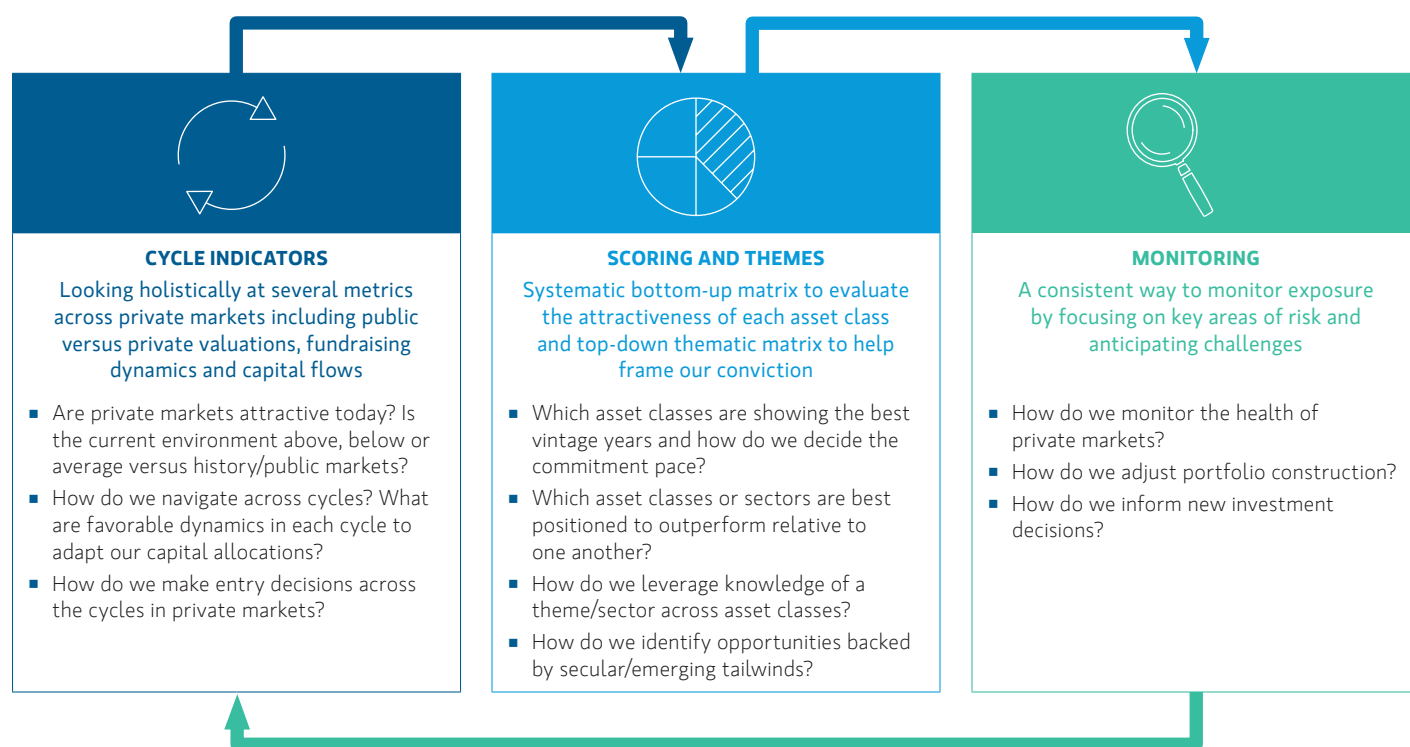
Our framework consists of three pillars that interact with one another and drive a self-informing investment loop, helping our decision-making process (*Display 1*). It also answers a series of important questions included in the display below:

Pillar 1: Cycle Indicators

In previous papers we did a “deep dive” on specific aspects of private markets investing. In “[A Standout in the Crowd?](#)” we looked at small-mid cap versus large cap in private equity and how

DISPLAY 1

Our Private Markets Asset Allocation Framework (PMAAF)



² One of the cornerstones of our approach is robust data, which we recognize can be difficult to replicate and/or source. In our case, for example, we are able to draw heavily on proprietary data sources and insights from a combination of open-architecture relationships; deep internal resources across direct Private Equity, Credit and Real Assets; and research/activity across our Investment Banking Division and Private Wealth Management.

to best uncover an alpha opportunity, while in “[Post-Crisis Private Markets Investing](#)” we explored the post-crisis point in the cycle and why we believe it is attractive for private markets. Finally, in “[Market Timing in Private Investments](#)” we analyzed whether the general partners (GPs) could time the market to take advantage of favorable vintage years.

In this paper, we explore how to holistically build and integrate these cycle indicators into our framework. We look at these indicators to 1) understand how attractive private markets are in the current period and determine where we are in the current economic cycle, 2) inform our allocation decisions, and 3) inform our implementation method. We look for several types of indicators, from traditional economic and macro-related signals to others used in public markets asset allocation decisions such as valuations and style, and others relating to the private markets universe such as capital raising dynamics.

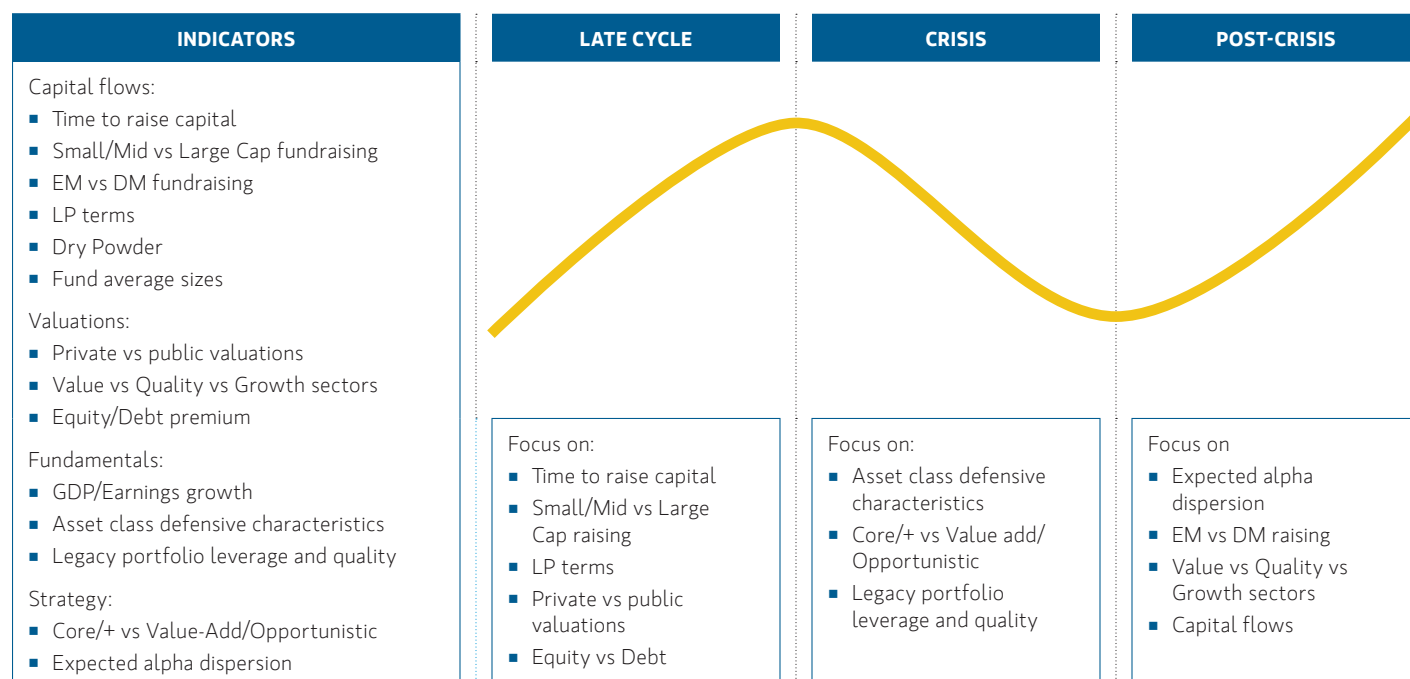
1. There are different viewpoints from which to determine attractiveness. For example, *from an absolute perspective do we consider the current vintage year to be attractive versus its own history, or from a relative perspective do we think private markets are better positioned than public markets?* We track several metrics at any given time to help investors answer these questions, namely GDP/earnings growth and expectations, dry powder levels, funds average sizes, time to raise capital, fundraising flows into small-mid cap versus large cap, emerging markets (“EM”) versus developed markets (“DM”), public versus private valuations, and equity versus debt premiums. The strength or weakness of every indicator helps to determine in which phase of the cycle we might be, although in certain cases a signal could be appropriate for more than just one phase.

We also find that simply looking at single indicators alone is generally

not informative. However, when looking at the whole picture, the strengths/weaknesses of these signals and their directionality, investors can form a view on when they are approaching the end of one cycle or the beginning of a new one, and proactively get ready and position for the next cycle (or existing one). As we highlighted above, detecting and interpreting cycle indicators might be subject to the availability of data and more importantly, how up-to-date that data is. We try to mitigate these problems by complementing private data with a limited lag with real-time public data, as well as by leveraging our deep industry network so that we build timely and informative data. ([Display 2](#)) outlines a non-exhaustive list of the cycle indicators used in the framework.

2. The strength and directionality of certain indicators help allocators *make investment decisions regarding the quantum and timing of*

DISPLAY 2 Illustrative Cycle Indicators



DISPLAY 3
Example Output of Our Private Markets Implementation Matrix

	IMPLEMENTATION					CAPITAL STRUCTURE			FUND LEVEL			ESG
As of 12/31/24	Unseeded Primaries	Seeded Primaries	Co-Invest	GP Second	LP Second	Debt	Structured	Equity	Deployment	Liquidity	Fees & Terms	ESG
Real Estate												
Infrastructure												
Natural Resources												
Private Equity						n/a						
Private Credit				n/a								

This information reflects the views of the portfolio manager as of the date hereof and these views are subject to change without notice in response to changing circumstances and market conditions. Views expressed relative to the independent historic ranges for each metric of each asset class. Green = more attractive, White = neutral, Blue = less attractive.

commitments to private markets. For example, during 2020-21, following the outbreak of COVID-19, the framework suggested to increase the private market commitments in anticipation of strong vintage years due to the fundamental backdrop of high revenue growth, high margins, low financing costs, pockets of improved entry valuations and a very accommodating environment for active managers to implement transformative business plans such as buy-and-build or platform investing.

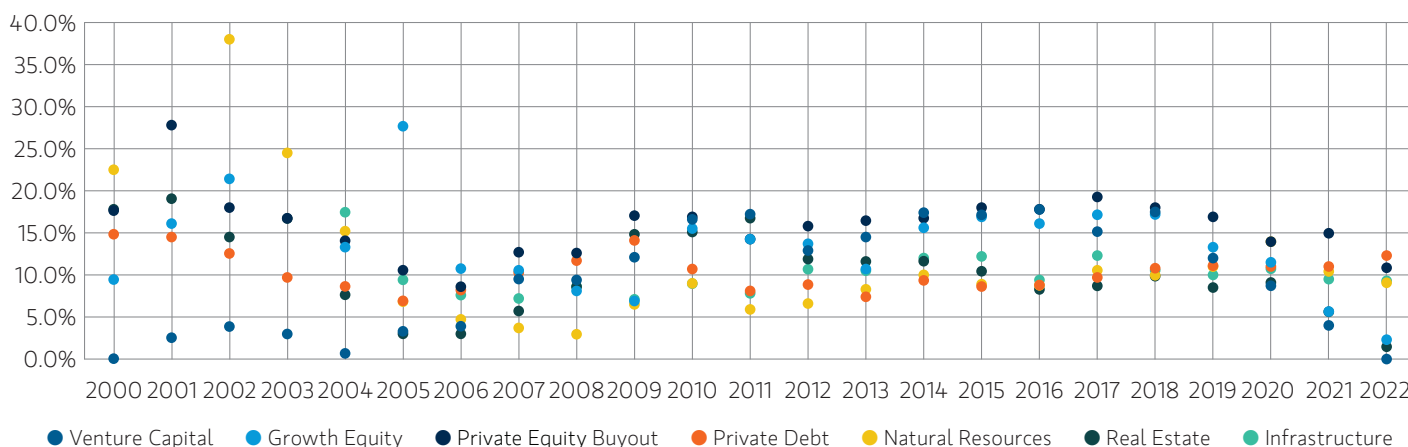
3. These indicators also suggest how to *choose the right implementation method.* Depending on which part of the economic cycle we think we are in, there are clear distinctions and considerations in allocating to primaries, co-investments or secondaries. For example, in an

environment where the indicators are pointing to an approaching crisis, but valuations are still reflecting a late-cycle scenario, the framework would then prefer the advantages of a primary blind pool of capital with a strong, prior-relationship manager that has an opportunistic/value-add strategy, rather than a core+ co-investment. The primary commitment may be deploying capital in what is likely to be an environment rich with dislocation/stresses, whereas the co-investment might not have enough discount at entry, given valuations are not fully pricing the crisis scenario and may have to fully absorb the recession and go through a recovery phase. As an example, in late 2022/early 2023, the Framework signaled to commit to Private Equity blind pool primaries to take advantage of

falling valuations and idiosyncratic opportunities, rather than a co-investment that would have to go through valuation adjustment in the initial phase. Or it could be the opposite; for example, at the onset of COVID-19, many opportunities emerged in real estate, among which were stressed/distressed opportunities in New York hotels. In this case, timing was critical and a traditional primary fund allocation would have lost all the early-stage opportunities while spending time fundraising, and most likely ended up with significant dry powder for an opportunity that was no longer available. For this reason, a co-investment sidecar that could act quickly on multiple opportunities was the preferred implementation method.

DISPLAY 4

Vintage Year Performance Across Asset Classes



Source: Preqin as of September 2024.

These indicators also help investors take a relative value approach with equity versus debt. For example, during 2021-22, the framework favoured equity and debt strategies that offer flexible capital solutions to develop a sourcing advantage with targets that are facing unconventional capital needs post-COVID. In 2020 and 2022, it focused on debt-first, post-public equity correction and then suggested to add to equity in private markets as equity caught up in terms of deal activity. Finally, we also look at fund level indicator (liquidity, deployment and fees/terms), which guides us on how attractive the fund universe is, and ESG, which considers the opportunity set and manager's policies/frameworks (Display 3).

Pillar 2: Scoring and Thematic Matrixes

Having determined the attractiveness of private markets at any specific point in time, allocators have to make several decisions including 1) where to allocate across private markets, 2) the relative sizing of the commitment versus

the budgeted pace, and 3) the most attractive sectors/opportunities within each asset class. These decisions are particularly relevant as private markets performance has significantly varied in the past both in terms of quantum and relative attractiveness (Display 4).

This decision-making process for many investors has been based on a qualitative assessment of the opportunity set and is not built to be objective and repeatable over time with any consistency. Our goal was to create a compelling and reliable bottom-up framework that is systematic, objective and repeatable, ultimately united with a broader, comprehensive thematic top-down matrix. These tools complement one another and have to be jointly considered when making decisions:

- On the one hand, the systematic bottom-up approach gives an allocator consistency and impartiality over time, helping to quantitatively assess the absolute and relative attractiveness of each asset class and sector. It fails, however, to

capture certain idiosyncrasies specific to each opportunity (e.g., quality of a particular building/asset/company, price at entry, micro-location/end market, management team, etc.) or external factors e.g., macro, regulatory framework, consumer behaviour, emerging themes, etc).

- On the other hand, the thematic top-down matrix makes sure an allocator keeps its *highest conviction ideas top of mind* and leverages the knowledge of a theme across asset classes, avoiding a fall into a potential "value trap" by simply following the fundamental and technical approach of the bottom-up framework. It does not, though, answer how attractive an asset class or sector is relative to another and the degree of this conviction.

The methodology and process for each matrix is outlined in the next section:

SCORING MATRIX

The primary objective of our Private Markets Scoring Matrix is to have a repeatable and objective output

Asset Classes and Sectors in Our Scoring Matrix

PRIVATE EQUITY	PRIVATE CREDIT	NATURAL RESOURCES	REAL ESTATE	INFRASTRUCTURE
<ul style="list-style-type: none">■ Buyout■ Growth Equity■ Venture Capital	<ul style="list-style-type: none">■ Direct Lending■ Real Estate Debt■ Distressed Debt■ Special Situations■ Asset Lease & Trade Finance■ CLO■ ABS■ Insurance■ Peer-to-Peer■ Bank Reg Cap■ Royalties■ Litigation Finance■ Transportation	<ul style="list-style-type: none">■ Farmland■ Timberland	<ul style="list-style-type: none">■ Office■ Logistic/Industrial■ Retail■ Multifamily/Residential	<ul style="list-style-type: none">■ Transportation■ Telecom■ Renewables■ Power Generation

each quarter that informs investment decisions while producing as ancillary product an extensive amount of data that could be used for different purposes. The output is organized at the asset class level with a further breakdown of different sectors (*Display 5*). We currently analyse five

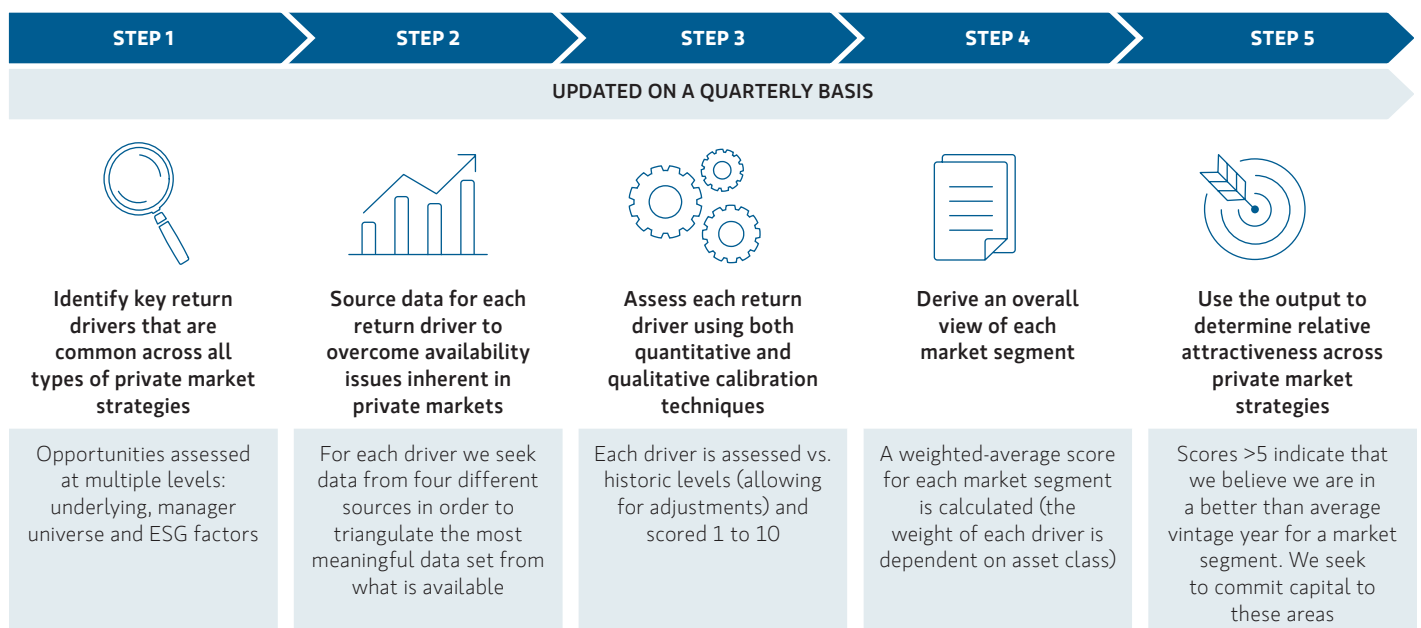
asset classes (Private Equity, Private Credit, Natural Resources, Real Estate and Infrastructure) and several sectors/strategies listed above. The asset class scores are derived from a bottom-up aggregation of the different sectors/strategies, which are weighed depending on a mix of opportunity set

transaction volume and long-term top-down strategic allocation.

This matrix focuses on the fundamentals and technical (supply/demand, market dynamics, valuation and leverage), which help us determine the attractiveness of a particular sector and asset class over time.

DISPLAY 6

The Process for Our Private Markets Scoring Matrix



STEP 1: For each fundamental and technical indicator we identify several return drivers specific to the asset class or sector, trying to get the most comprehensive view of what is driving that indicator. We provide some examples in (*Display 7*).

STEP 2: We try to triangulate public and private market data from many different sources, and in cases where little to no information is available, we use our network of managers and data points from our investment underwriting to build the framework's database. We believe that for certain asset classes and strategies where there is little public or private data (certain private credit sectors particularly) our surveys and anecdotal information that we get from GPs, conferences and broader industry

network are key to complementing the database.

STEP 3: We score each return driver according to the nature of the data and the historic levels over the last 15-20 years (more where data is available). For mean reverting or cyclical data such as vacancies, valuations, loan-to-value (LTV), etc., we use percentiles to ensure our scoring is consistent. A 50% percentile would equate to a neutral score of 5, a 60% percentile a positive score of 6 and so on. For growing data such as development pipeline, fundraising, dry powder, etc., we use growth rates, trends and standard deviations. For example, if the historic long-term compound annual growth rate (CAGR) is 2%, that would represent our neutral score, and

then we use positive/negative 2 and 3 standard deviations (95% and 99.7% of data observed under the assumption of a normal distribution) as boundaries for top/bottom range of our scoring.³

STEP 4: We assign weights to each indicator and sub-weights to each return driver. Within an asset class the sub-weights for return drivers across sectors are identical to allow for comparability, while across asset classes the weight for each indicator varies in order to accommodate the specific characteristics of each asset class. For example, supply and demand may carry a higher weight in real assets than private equity while the opposite is true for valuation.

DISPLAY 7 Potential Drivers of Returns

INDICATORS:	SUPPLY	DEMAND	MARKET DYNAMICS	VALUATION	LEVERAGE
Real Estate return drivers	Development Pipeline, Completions	Absorption rates, Vacancy, rental growth	CMBS Issuance, Dry Powder, Transactions, Fundraising dynamics, LP leverage	Cap rates, Cap rates spread	LTV, debt yield, YTM, stress ratio
Infrastructure return drivers	Funding gap, Infra Quality, Development Pipeline	Air/sea/railroad transport volume, Electricity production, Net GW Capacity, LCOE, Capex, Fiber/5G Subscriptions	Municipal Bond Issuance, Dry Powder, Transactions, Fundraising dynamics, LP leverage	EV/EBITDA	Net Debt/EBITDA, YTW
Natural Resources return drivers	Arable land/capita Forest land/capita Food/Timber production	Food Consumption, food prices, paper/pulp consumption, housing starts	Profit Margin, Inflation, Dry Powder, Transactions, Fundraising dynamics, LP leverage	EV/EBITDA, Land/forest capital appreciation, distribution yield	Net Debt/EBITDA, USDA interest rates
Private Credit return drivers	PE Dry powder, PE transaction volume	PC dry powder	Trailing 12m default rate, distress ratio, % of positions in PC portfolios on "watch"	OID, LIBOR, Margin, # of restrictive covenants, # of maintenance covenants	Debt/EBITDA, Interest coverage
Private Equity return drivers	GDP Growth expectations VC: High Propensity to New Businesses Growth: VC Exit Value Buyout: Deal Value	Dry Powder, CCI, BCI	PMI, EBITDA/EPS growth, EBITDA margin, Fundraising dynamics, LP leverage	VC: Pre-money valuations Growth: EV/Revenue Buyout: EV/EBITDA	VC: N/A GE/BO: Debt/EBITDA, Interest Coverage, Equity Contribution, LBO spreads, stress ratio

³ It is important to balance the quantitative inputs with some practicality given the data and the models are not perfect when dealing with private markets, so our framework allows for manual adjustments based on qualitative factors when necessary

DISPLAY 8

Example Output of Our Private Markets Scoring Matrix

As of 12/31/24	OVERALL		FUNDAMENTALS & TECHNICALS				
	Previous	Current	Supply	Demand	Market dyn	Valuation	Leverage
Real Estate	5.8 (Positive)	5.9 (Positive)					
Infrastructure	5.7 (Neutral/Positive)	5.7 (Neutral/Positive)					
Natural Resources	5.3 (Neutral)	5.4 (Neutral/Positive)					
Private Equity	5.6 (Neutral/Positive)	5.6 (Neutral/Positive)					
Private Credit	5.5 (Neutral/Positive)	5.5 (Neutral/Positive)					

This information reflects the views of the portfolio manager as of the date hereof and these views are subject to change without notice in response to changing circumstances and market conditions. Views expressed relative to the independent historic ranges for each metric of each asset class. Green = more attractive, White= neutral, Blue = less attractive.

STEP 5: Steps 1-4 give us a score for each sector and asset class. In Step 5 we interpret the output (Display 8) and use it to make our investment decision, something that helps us on three dimensions:

1. ABSOLUTE ATTRACTIVENESS SCORING:

A score between 4.75 and 5.25 is **Neutral**. We would expect to be in an average vintage relative to history, so we would focus to deploy capital where there are also some thematic tailwinds and/or abundance of idiosyncratic opportunities.

A score between 5.25 and 5.75 reflects we are **Moderately Positive** on the asset class or sector, comfortably investing based on our budgeted commitment.

Similarly, a score between 4.25 and 4.75 means we would be **Cautious on Deploying Capital**, potentially reducing the size and number of our commitments and focusing just on our highest conviction strategies/sectors.

A score above 5.75 means we would be actively looking to **Deploy More Capital** than our budgeted

commitment as the fundamentals are strong and we expect to be in a better-than-average vintage year.

Finally, a score below 4.25 means **We Would Hold From Investing** in that sector or asset class unless we find deep quality/idiosyncratic opportunities or until the score has improved again.

2. RELATIVE ATTRACTIVENESS: These scores also help us assessing relative value across asset classes and in any particular vintage year can give us helpful indications on whether to over/underweight a particular asset class/sector relative to its target strategic asset allocation. For example, the framework signaled to pause Real Estate commitments for approximately one year post interest rates hike in 2022 as valuations did not adjust for a prolonged period of time to the market conditions.

3. ENTRY TIMING: In our previous paper "[Market Timing in Private Investments](#)" we observed how private market asset managers have historically not taken advantage of

market timing and thus concluded investors should increase and time their commitments in order to obtain the desired exposure to investments at favorable valuations. The scope of our paper was limited to a specific point in the cycle, the post-crisis period, and did not offer specific asset class/sector considerations on what tools to use to make entry decisions. We believe this scoring matrix gives allocators a comprehensive way to time market entry across cycles, asset classes and sectors.

As an example we consider how this framework would aid decisions in two periods with a great deal of uncertainty and volatility: 2020 and 2022. Within private credit, two main areas were sharply highlighted: first, the framework promoted investing in uncorrelated income sources due to elevated uncertainty and second, it also supported adding to markets where dislocations were signalling potentially strong tactical entry points, such as direct lending where there were windows of better pricing, stronger lender terms and

DISPLAY 9
Example Output of Our Private Markets Thematic Matrix

	NEW LIVING	DIGITIZATION/ AUTOMATION	DECARBONIZATION	SUSTAINABILITY
PRIVATE EQUITY	<ul style="list-style-type: none"> Fintech E-commerce enablers OTC/Specialty Pharma 	<ul style="list-style-type: none"> Industry 4.0 SaaS IOT Robotics AI 	<ul style="list-style-type: none"> Smart Homes Smart Mobility 	<ul style="list-style-type: none"> Plant based food Specialty Care Impact Investing Circular Economy
INFRASTRUCTURE	<ul style="list-style-type: none"> Supply chain transportation Future transportation 	<ul style="list-style-type: none"> Rural Fibre 5G 	<ul style="list-style-type: none"> Energy transition Electrification Renewable Power 	<ul style="list-style-type: none"> Water infrastructure Recycling & Waste management
REAL ESTATE	<ul style="list-style-type: none"> Creative Office Life Science Co-Living Co-warehousing 	<ul style="list-style-type: none"> Data Centres 	<ul style="list-style-type: none"> Green Buildings 	<ul style="list-style-type: none"> Affordable Housing Student Housing Senior Housing Medical Office
PRIVATE CREDIT	<ul style="list-style-type: none"> Peer to Peer lending 	<ul style="list-style-type: none"> Private ABS 	<ul style="list-style-type: none"> Debt to Decarbonization themes 	<ul style="list-style-type: none"> Debt to Sustainability themes
NATURAL RESOURCES	<ul style="list-style-type: none"> Premium food 	<ul style="list-style-type: none"> Rare Earth Minerals 	<ul style="list-style-type: none"> Afforestation/ Reforestation Electrification Minerals 	<ul style="list-style-type: none"> Regenerative Farming Controlled Environment Farming

As of December 31, 2024.

better company-level risk metrics (e.g., lower leverage); trade finance that benefited from a combination of disruptions to the global supply chain at the underlying level and from exits by large finance providers at the transaction level (e.g., Greensill); and lastly, aviation finance strategies targeting regional jets that disproportionately benefitted from the recovery and passenger-to-freight conversions to capitalize on favorable aircraft purchase prices and lease rates.

THEMATIC MATRIX

Given the investment horizon for private markets spans across several years, we focus on structural

megatrends, either current or emerging, expected to shape the long-term trajectory of the economy including new adaptations to living, demographic shifts, technological innovations, climate change, sustainability, etc. (*Display 9*). We do not focus on what we consider to be short-term, transitory themes, even if we recognize their attractiveness, as we think those are better suited for certain public investments where implementation can be more responsive. *We believe these structural megatrends, combined with a deep due diligence and the right sponsor, can provide a differentiated source of alpha*

alongside traditional idiosyncratic bottom-up alpha, which we refer to as “strategy alpha.”

There are multiple benefits for combining this thematic top-down approach with a more structured bottom-up approach, which include:

- Leverage knowledge of a theme/ sector across asset classes: For example, when working on an energy transition fund search for the infrastructure allocation, *the knowledge acquired in studying the market across the entire supply chain, from the pure upstream* (understanding the minerals and

metals required in the grid for battery storage, solar panels, wind turbines, the suppliers landscape, EPCs, price mechanism, etc.) to the midstream (grid efficiency, interconnection, utilities) to the downstream (distribution network, energy retailers, rooftop solar, heat pumps), *can be levered in other asset classes* such as natural resources mining, private equity smart homes or real estate green buildings.

- Control the emphasis on value in our bottom-up matrix: For example, a year and a half after the COVID-19 outbreak, our bottom-up score for retail real estate was slightly positive as new supply was low, demand was stable and valuations were significantly better than in other sectors and with low leverage. However, we understand the traditional retail model is challenged, and under the “New Living” theme we expect these challenges to persist. *This top-down overlay, although in this instance is quite straightforward, helps investors to avoid falling into “value traps”.*
- Identify alpha opportunities in niche areas supported by external macro/regulatory/consumer behaviour tailwinds: *There are certain aspects that we cannot capture quantitatively or do not have a consistent data set over time, such as regulatory regimes, consumer sentiment, preferences and behaviour. Other quantitative aspects such as demographics would impact a theme more so than a particular asset class, or certain macro factors would impact the entire economy rather than a particular asset class. Identifying how these aspects interact with themes allows us to exploit the associated tailwinds that would not be captured by a pure fundamental approach.* For example, one of the trends in our private equity allocation has been to focus on European small/

mid-cap health care where long-term structural, resilient growth in products/services, pockets of high fragmentation, complexity driven by regulation and cross-border differences have created attractive opportunities for the few European specialist managers with a focus in a stronger technical product/service. The matrix, post-2020, has favoured investments in sectors that are benefiting from generational tailwinds, such as digital infrastructure (due to exponential growth of data and the advent of industrial-scale AI training), energy transition (due to cost and time competitiveness and security of renewable generation relative to new fossil-fuel generation), and climate infrastructure (due to increase scarcity and costs in finite resources such as water). Finally, toward the end of 2021, we started re-entering the farmland/sustainable food space given the attractiveness of long-term fundamentals including declining arable land per capita, growing demand to support rising population and middle-class protein/premium food needs, inflation sensitivity, and stronger sustainability trends and carbon sinkage opportunities.

Pillar 3: Monitoring

Monitoring in private markets presents different challenges compared to public markets: the transparency and availability of data, the long J-Curve before a better estimate of potential performance, the illiquidity that makes an exit at times complex or only feasible at a significant discount, if available. We think that by following Pillars 1 and 2 of the process we get to a better, more informed monitoring process.

- We consider this whole process as part of a larger, fully integrated, front-line risk management framework, where we start by

understanding the current attractiveness of private markets and how much to allocate, and act proactively if a reduction for new commitments is needed. We then identify the most attractive opportunities across asset classes, as well as areas where indicators are showing that fundamentals and technicals are deteriorating and might pose a future challenge. The aim is to respond proactively, by potentially pausing or reducing an allocation, as well as reactively, by focusing and prioritizing monitoring activities. For example, if the framework highlights that return drivers like leverage and fundamentals from Pillar 2 are deteriorating, that would help allocators prioritize monitoring in those troubled sectors/asset classes and the managers that might be under increased pressure. For example, during 2025 Liberation Day tariffs announcement, the framework helped reassessing the revenues, costs and supply chain impact across all asset classes and sub-sectors, providing KPIs to monitor going forward for new commitments.

- Moreover, *this process supports investors in reconsidering the overall portfolio construction and tactical allocation among private markets. Specifically, it looks at the portfolio concentration in certain sectors/asset classes and helps decide whether to reduce exposure to the current vintage year or not allocate at all, change a strategic target sub-weight in an asset class, or consider a secondary exit.* For example, while monitoring overall private markets valuations post-COVID-19, different indicators were weakening for late-stage venture capital, such as increasing in valuations due to elevated dry powder levels, strong fundraising/investor appetite and slightly deteriorating fundamentals.

This has made us favor early-stage versus late-stage venture capital.

- *Finally, this whole process of monitoring and reconsidering portfolio construction may eventually, and seamlessly, blend into the start of a new cycle and inform new investment decisions* where cycle indicators and asset classes attractiveness are re-evaluated once again. When committing to a private investment, the upfront underwriting informs also the key monitoring points for the asset class/strategy. These key performance indicators (KPIs) are included in the framework so that investors can continue to monitor and measure success much more granularly than watching and benchmarking returns, and, equally important, inform new investment decisions. For instance, in 2019, indicators of the GDP sensitivity to global traffic volume were increasing,

supporting a reduction in the transportation sector exposure. As such, we redeemed investments in one of our core infrastructure funds and rejected certain new investments to reduce GDP sensitivity in the late cycle. The framework highlighted sub-asset class choices where GDP sensitivity was acceptable; for example, in 2019, we allocated to aviation finance through regional jets that have lower cyclicalities in demand.

These steps are essentially happening almost simultaneously and in parallel with our day-to-day activity, although in terms of a pure decision-making process it is important to distinguish them and make informed decisions at each step. We strongly believe in the importance of doing this on a regular and continual basis, not just during the quarterly update of the Scoring Matrix, helping allocators capture trends/risks as soon as there are changing signals.

Conclusion

Many allocators and investors are still relying on subjective and qualitative frameworks when making decisions on asset allocation, portfolio construction and timing in private markets. We believe that today a larger and more diverse allocation, with more asset classes now accepted as “core” alternatives, as well as an increasing number of new investors in private markets, requires a well-established, repeatable, objective and data-driven framework to support investment decisions. Our three-pillar framework, combining cycle indicators, quantitative fundamental scoring and qualitative thematic overlay, reinforced with an independent monitoring oversight process, could help investors navigate the challenges intrinsic to private markets.

DISTRIBUTION

This communication is only intended for and will only be distributed to persons resident in jurisdictions where such distribution or availability would not be contrary to local laws or regulations.

In the EU, MSIM and Eaton Vance materials are issued by MSIM Fund Management (Ireland) Limited (“FMIL”). FMIL is regulated by the Central Bank of Ireland and is incorporated in Ireland as a private company limited by shares with company registration number 616661 and has its registered address at 24-26 City Quay, Dublin 2, DO2 NY19, Ireland.

United Kingdom: Morgan Stanley Investment Management Limited is authorised and regulated by the Financial Conduct Authority. Registered in England. Registered No. 1981121. Registered Office: 25 Cabot Square, Canary Wharf, London E14 4QA, authorised and regulated by the Financial Conduct Authority. **Dubai:** Morgan Stanley Investment Management Limited (Representative Office, Unit Precinct 3-7th Floor-Unit 701 and 702, Level 7, Gate Precinct Building 3, Dubai International Financial Centre, Dubai, 506501, United Arab Emirates. Telephone: +97 (0)14 709 7158).

Germany: Morgan Stanley Investment Management Limited Niederlassung Deutschland Junghofstrasse 13-15 60311 Frankfurt Deutschland (Gattung: Zweigniederlassung (FDI) gem. § 53b KWG). **Ireland:** Morgan Stanley Investment Management (Ireland) Limited. Registered Office: The Observatory, 7-11 Sir John Rogerson’s, Quay, Dublin 2, Ireland. Registered in Ireland under company number 616662. Authorised and regulated by Central Bank of Ireland. **Italy:** Morgan Stanley Investment Management Limited, Milan Branch (Sede Secondaria di Milano) is a branch of Morgan Stanley Investment Management Limited, a company registered in the U.K., authorised and regulated by the Financial Conduct Authority (FCA), and whose registered office is at 25 Cabot Square, Canary Wharf, London, E14 4QA. Morgan Stanley Investment Management Limited Milan Branch (Sede Secondaria di Milano) with seat in Palazzo Serbelloni Corso Venezia, 16 20121 Milano, Italy, is registered in Italy with company number and VAT number 08829360968. **The Netherlands:** Morgan Stanley Investment Management, Rembrandt Tower, 11th Floor Amstelplein 11096HA, Netherlands. Telephone: 31 2-0462-1300. Morgan Stanley Investment Management is a branch office of Morgan Stanley Investment

Management Limited. Morgan Stanley Investment Management Limited is authorised and regulated by the Financial Conduct Authority in the United Kingdom. **Switzerland:** Morgan Stanley & Co. International plc, London, Zurich Branch I Authorised and regulated by the Eidgenössische Finanzmarktaufsicht (“FINMA”). Registered with the Register of Commerce Zurich CHE-115.415.770. Registered Office: Beethovenstrasse 33, 8002 Zurich, Switzerland, Telephone +41 (0) 44 588 1000. Facsimile Fax: +41(0)44 588 1074.

Japan: For professional investors, this document is circulated or distributed for informational purposes only. For those who are not professional investors, this document is provided in relation to Morgan Stanley Investment Management (Japan) Co., Ltd. (“MSIMJ”)’s business with respect to discretionary investment management agreements (“IMA”) and investment advisory agreements (“IAA”). This is not for the purpose of a recommendation or solicitation of transactions or offers any particular financial instruments. Under an IMA, with respect to management of assets of a client, the client prescribes basic management policies in advance and commissions MSIMJ to make all investment decisions based on an analysis of the value, etc. of the securities, and MSIMJ accepts such commission. The client shall delegate to MSIMJ the authorities necessary for making investment. MSIMJ exercises the delegated authorities based on investment decisions of MSIMJ, and the client shall not make individual instructions. All investment profits and losses belong to the clients; principal is not guaranteed. Please consider the investment objectives and nature of risks before investing. As an investment advisory fee for an IAA or an IMA, the amount of assets subject to the contract multiplied by a certain rate (the upper limit is 2.16% per annum (including tax)) shall be incurred in proportion to the contract period. For some strategies, a contingency fee may be incurred in addition to the fee mentioned above.

Indirect charges also may be incurred, such as brokerage commissions for incorporated securities. Since these charges and expenses are different depending on a contract and other factors, MSIMJ cannot present the rates, upper limits, etc. in advance. All clients should read the Documents Provided Prior to the Conclusion of a Contract carefully before executing an agreement. This document is disseminated in Japan by MSIMJ,

Registered No. 410 (Director of Kanto Local Finance Bureau (Financial Instruments Firms)), Membership: the Japan Securities Dealers Association, The Investment Trusts Association, Japan, the Japan Investment Advisers Association and the Type II Financial Instruments Firms Association.

U.S.

A separately managed account may not be suitable for all investors. Separate accounts managed according to the Strategy include a number of securities and will not necessarily track the performance of any index. Please consider the investment objectives, risks and fees of the Strategy carefully before investing. A minimum asset level is required. For important information about the investment manager, please refer to Form ADV Part 2.

NOT FDIC INSURED. OFFER NO BANK GUARANTEE. MAY LOSE VALUE. NOT INSURED BY ANY FEDERAL GOVERNMENT AGENCY. NOT A DEPOSIT.

Hong Kong: This document has been issued by Morgan Stanley Asia Limited for use in Hong Kong and shall only be made available to "professional investors" as defined under the Securities and Futures Ordinance of Hong Kong (Cap 571). The contents of this document have not been reviewed nor approved by any regulatory authority including the Securities and Futures Commission in Hong Kong. Accordingly, save where an exemption is available under the relevant law, this document shall not be issued, circulated, distributed, directed at, or made available to, the public in Hong Kong. **Singapore:** This document should not be considered to be the subject of an invitation for subscription or purchase, whether directly or indirectly, to the public or any member of the public in Singapore other than (i) to an institutional investor under section 304 of the Securities and Futures Act, Chapter 289 of Singapore ("SFA"), (ii) to a "relevant person" (which includes an accredited investor) pursuant to section 305 of the SFA, and such distribution is in accordance with the conditions specified in section 305 of the SFA; or (iii) otherwise pursuant to, and in accordance with the conditions of, any other applicable provision of the SFA. This material has not been reviewed by the Monetary Authority of Singapore. **Australia:** This publication is disseminated in Australia by Morgan Stanley Investment Management (Australia) Pty Limited ACN: 122040037, AFSL No. 314182, which accept responsibility for its contents. This publication, and any access to it, is intended only for "wholesale clients" within the meaning of the Australian Corporations Act.

IMPORTANT INFORMATION

There is no guarantee that any investment strategy will work under all market conditions, and each investor should evaluate their ability to invest for the long-term, especially during periods of downturn in the market. Prior to investing, investors should carefully review the strategy's/product's relevant offering document. There are important differences in how the strategy is carried out in each of the investment vehicles.

A separately managed account may not be suitable for all investors.

Separate accounts managed according to the Strategy include a number of securities and will not necessarily track the performance of any index. Please consider the investment objectives, risks and fees of the Strategy carefully before investing.

The views and opinions are those of the author or the investment team as of the date of preparation of this material and are subject to change at any time due to market or economic conditions and may not necessarily come to pass. Furthermore, the views will not be updated or otherwise revised to reflect information that subsequently becomes available or

circumstances existing, or changes occurring, after the date of publication. The views expressed do not reflect the opinions of all investment teams at Morgan Stanley Investment Management (MSIM) or the views of the firm as a whole, and may not be reflected in all the strategies and products that the Firm offers.

Forecasts and/or estimates provided herein are subject to change and may not actually come to pass. Information regarding expected market returns and market outlooks is based on the research, analysis and opinions of the authors. These conclusions are speculative in nature, may not come to pass and are not intended to predict the future performance of any specific Morgan Stanley Investment Management product.

Certain information herein is based on data obtained from third party sources believed to be reliable. However, we have not verified this information, and we make no representations whatsoever as to its accuracy or completeness.

This communication is not a product of Morgan Stanley's Research Department and should not be regarded as a research recommendation. The information contained herein has not been prepared in accordance with legal requirements designed to promote the independence of investment research and is not subject to any prohibition on dealing ahead of the dissemination of investment research.

This material is a general communication, which is not impartial and has been prepared solely for informational and educational purposes and does not constitute an offer or a recommendation to buy or sell any particular security or to adopt any specific investment strategy. All investments involve risks, including the possible loss of principal. The information herein has not been based on a consideration of any individual investor circumstances and is not investment advice, nor should it be construed in any way as tax, accounting, legal or regulatory advice. To that end, investors should seek independent legal and financial advice, including advice as to tax consequences, before making any investment decision.

Any index referred to herein is the intellectual property (including registered trademarks) of the applicable licensor. Any product based on an index is in no way sponsored, endorsed, sold or promoted by the applicable licensor and it shall not have any liability with respect thereto.

MSIM Ireland has not authorised financial intermediaries to use and to distribute this document, unless such use and distribution is made in accordance with applicable law and regulation. Additionally, financial intermediaries are required to satisfy themselves that the information in this document is suitable for any person to whom they provide this document in view of that person's circumstances and purpose. MSIM Ireland shall not be liable for, and accepts no liability for, the use or misuse of this document by any such financial intermediary.

This document may be translated into other languages. Where such a translation is made this English version remains definitive. If there are any discrepancies between the English version and any version of this document in another language, the English version shall prevail.

The whole or any part of this work may not be reproduced, copied or transmitted or any of its contents disclosed to third parties without MSIM Ireland's express written consent.

Morgan Stanley Investment Management is the asset management division of Morgan Stanley.

All information contained herein is proprietary and is protected under copyright law.